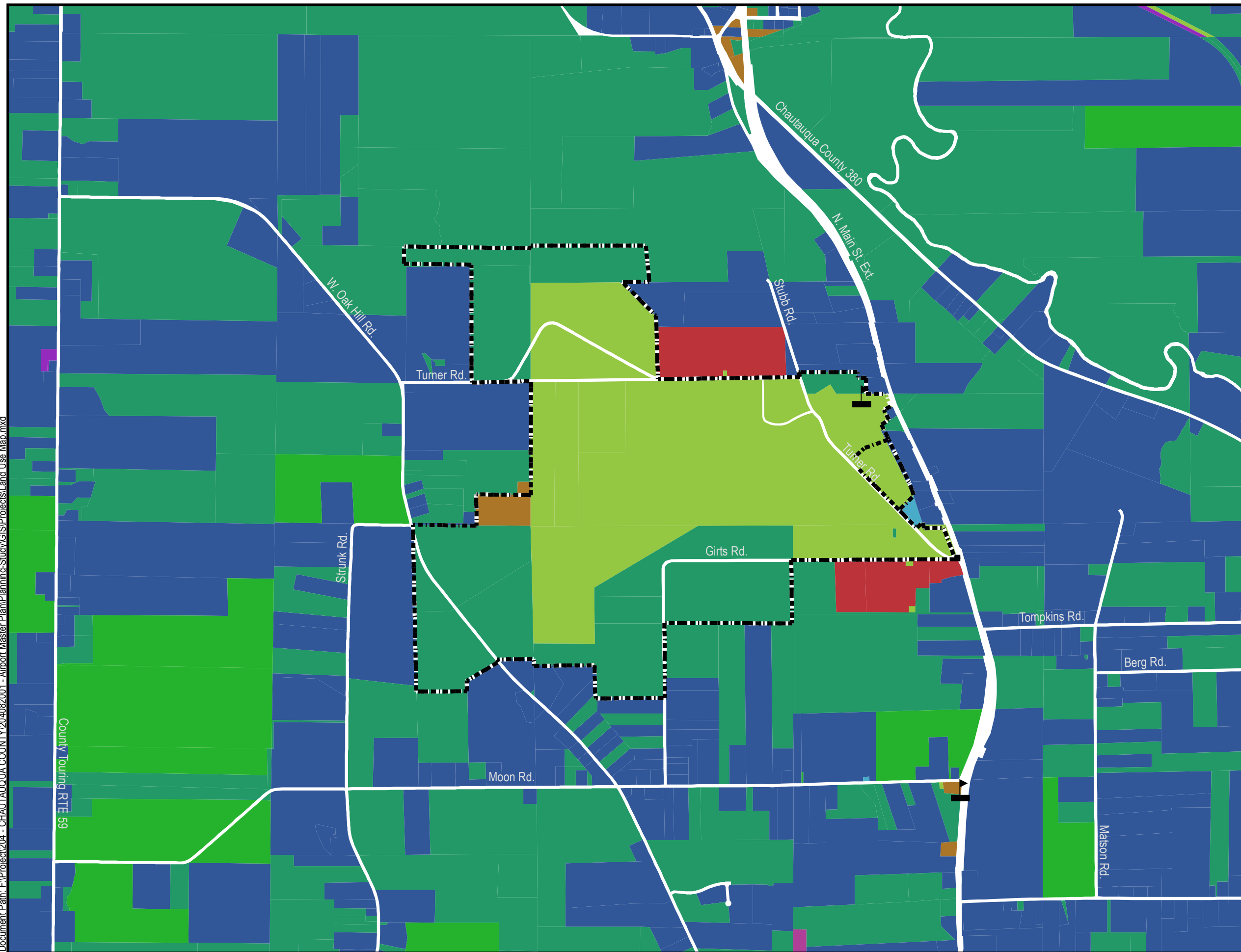


Date: 2/27/2019
Document Path: F:\Project\204 - CHAUTAUQUA COUNTY\204082001 - Airport Master Plan\Planning-Study\GIS\Projects\Land Use Map.mxd



Legend

- Airport Property Line
- 🏫 School
- NYS Land Use Classifications**
- Public Services
- Industrial
- Community Services
- Recreation & Entertainment
- Commercial
- Vacant Land
- Residential
- Agricultural
- Not Available
- Wild, Forested, Conservation Lands & Public Parks

N

0 500 1,000 2,000 3,000 Feet
1 inch = 1,500 feet
When printed at 8.5" x 11"



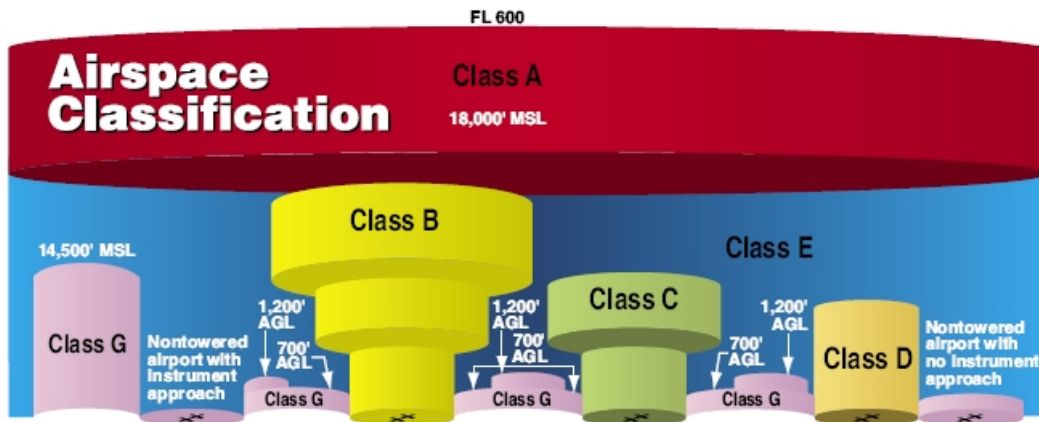
Chautauqua County Airport - Jamestown
Master Plan


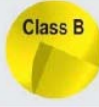

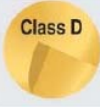


Land Use Map

Figure 1-12

Sources: Agricultural Districts from CUGIR; Aerial from Woolpert 2017

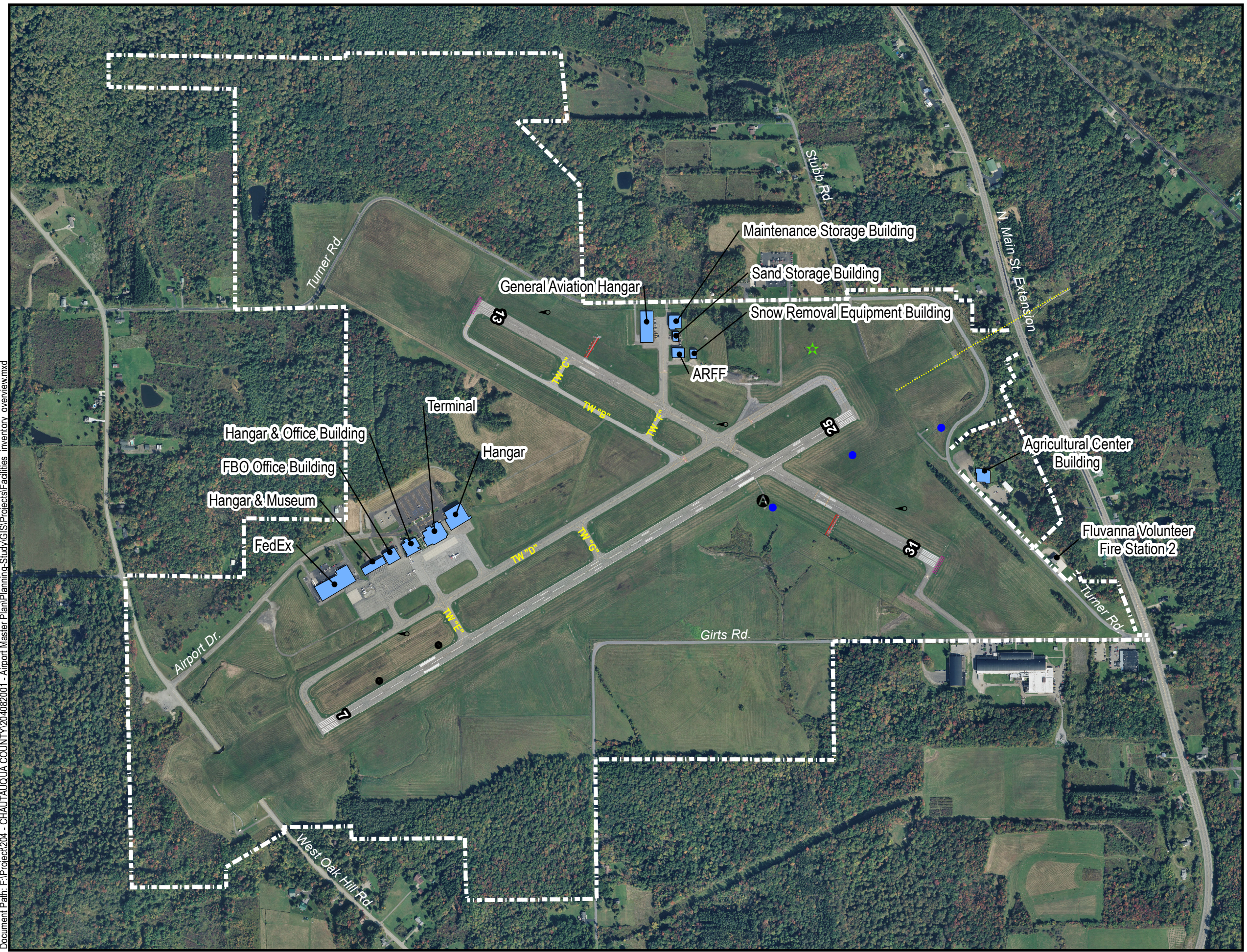
Figure 1-17 | Airspace Classification



						
Entry Requirements	ATC clearance	ATC clearance	Prior two-way communications	Prior two-way communications	Prior two-way communications*	Prior two-way communications*
Minimum Pilot Qualifications	Instrument Rating	Private or Student certification—local restrictions apply.	Student certificate	Student certificate	Student certificate	Student certificate
Two-Way Radio Communications	Yes	Yes	Yes	Yes	Yes, under IFR flight plan*	Yes*
Special VFR Allowed	No	Yes	Yes	Yes	Yes	N/A
VFR Visibility Minimum	N/A	3 statute miles	3 statute miles	3 statute miles	3 statute miles**	1 statute mile†
VFR Minimum Distance from Clouds	N/A	Clear of clouds	500' below, 1,000' above, 2,000' horizontal	500' below, 1,000' above, 2,000' horizontal	500' below,** 1,000' above, 2,000' horizontal	Clear of clouds†
VFR Aircraft Separation	N/A	All	IFR aircraft	Runway operations	None	None
Traffic Advisories	Yes	Yes	Yes	Workload permitting	Workload permitting	Workload permitting
Airport Application	N/A	<ul style="list-style-type: none"> • Radar • Instrument approaches • Weather • Control tower • High density 	<ul style="list-style-type: none"> • Radar • Instrument approaches • Weather • Control tower 	<ul style="list-style-type: none"> • Instrument approaches • Weather • Control tower 	<ul style="list-style-type: none"> • Instrument approaches • Weather 	<ul style="list-style-type: none"> • Control tower
<small>*Exception: temporary tower or control tower present **True only below 10,000 feet † True only during day at or below 1,200 feet AGL (see 14 CFR part 91)</small>						<small>AGL—above ground level FL—flight level MSL—mean sea level</small>

Source: FAA (2018) *Airspace Classification* [Online] Accessible at: http://aspmhelp.faa.gov/index.php/Airspace_Classification (Accessed 8 January 2018)

Date: 2/27/2019
 Document Path: F:\Project\204 - CHAUTAUQUA COUNTY\204082001 - Airport Master Plan\Planning-Study\GIS\Projects\Facilities_inventory_overview.mxd



Legend

- Airport Property Line
- Facilities
- NAVAIDs**
- Lighted Windcone
- PAPI
- REIL
- VASI
- ALS
- AWOS
- ILS-LOC
- Airport Beacon

N

0 200 400 800 1,200 1,600 Feet
 1 inch = 800 feet
 When printed at 8.5" x 11"



Chautauqua County Airport - Jamestown
 Master Plan

Existing Facilities

Figure 1-16

Sources: Aerial (2017) from Woolpert.