

## VOLUNTEERING TO ADVANCE GREENWAYS IN CHAUTAUQUA COUNTY

The Friends of Chautauqua Greenways represents all recreation and conservation interests within the county, including:

- Hikers
- Cyclists (on and off-road)
- Mountain Bicyclists
- Cross-Country Skiers
- Equestrians
- Hunters & Anglers
- Wildlife & Bird Watchers
- Conservationists
- Watershed Preservationists
- Farmers
- Canoe/Kayakers
- Snowmobilers
- ATVers
- ..... to name a few.

**No matter what your interest, there is a way you can volunteer to help us achieve our vision for greenways in Chautauqua County.** It could be to help us maintain our existing trails, build new trails, be a trail patrol volunteer, acquire conservation easements, assist with developing partnerships, fund raising, assisting with marketing and tourism, planning and organizing special events, coordinating volunteers, helping manage the website, and much more.

We hope you are inspired to help us improve our quality of life, to encourage economic development through greenway marketing and tourism efforts, and to fulfill our desire to establish Chautauqua County as a four season destination for outdoor active living and lifelong learning.



Photo Credit: Michael Kotyk

# CHAUTAUQUA COUNTY Greenway Plan

April 2012



*A four season destination for outdoor active living, nurtured by public/private partnerships.*



To assist us in advancing the vision and goals of greenways in Chautauqua County, please visit:

[www.friendsofchautauquagreenways.org](http://www.friendsofchautauquagreenways.org)

or contact:

Mr. Mark Geise  
 Chautauqua County Department of  
 Planning and Economic Development  
 200 Harrison Street  
 Jamestown, NY 14701  
 (716) 661-8912



# THE CHAUTAUQUA COUNTY GREENWAY PLAN

This greenway planning effort and the resulting recommendations are a response to the desires of county residents to preserve and promote our natural assets, as expressed in the **Chautauqua 20/20 Comprehensive Plan** adopted by the County Legislature in April of 2011.

This plan defines steps for us to take to:

- Formalize and maintain our rural outdoor lifestyle;
- Fulfill our desire to be a four season destination for active outdoor living; and,
- Capitalize on the positive economic impact that can be realized through providing goods and services that visitors to our county desire.

During the planning process for the development of the Chautauqua County Greenway Plan, a survey was conducted to determine residents and visitors opinions on a variety of greenway topics. Through this survey we learned:

- The top three qualities influencing residents decision to live in Chautauqua County are:
  1. The natural environment (57.0%)
  2. Open space & rural character (50.1%)
  3. Quality schools (39.7%)

With regards to the residents' opinions of trails, greenways, and preserved open space:

- 89.1% believe they positively impact eco-tourism and real estate values in the county;
- 96.7% of the respondents said greenways would enhance the quality of life in Chautauqua County;
- 90.7% indicated the development of a system of trails, greenways, and open space throughout Chautauqua County is important or very important; and
- 20% indicated they would be interested in volunteering to create and/or maintain greenways.

Through the planning process, a Mission, Vision, and Goals were developed for greenways in Chautauqua County.

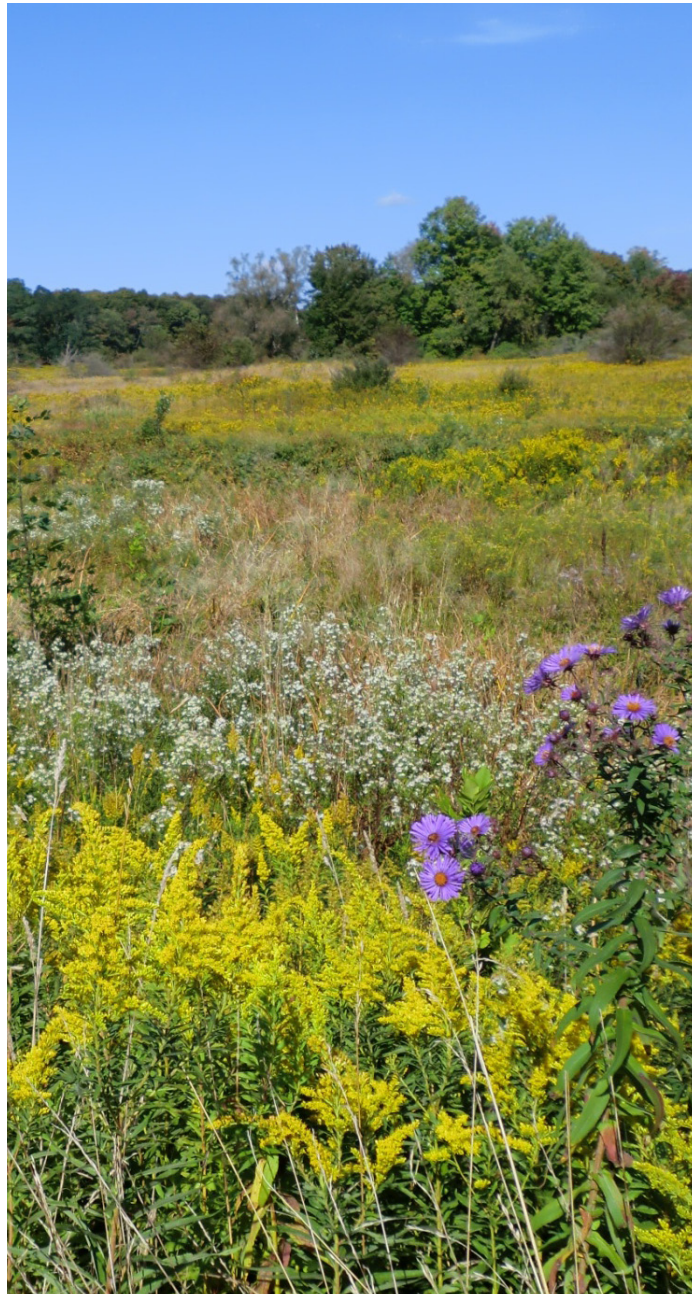


Photo Credit: Michael Kotyk

The Greenway Plan, Appendices and Executive Summary can be accessed on the CCPED website: [www.planningchautauqua.com](http://www.planningchautauqua.com).

Choose the "Econ. & Trails Dev." page and click on the "Greenway Plan" from the pull down menu.

## POTENTIAL DEMONSTRATION PROJECTS

As a result of this planning process, 39 potential recreation greenway trails, 20 proposed natural system corridors, 20 proposed trail towns, 13 proposed hubs, and 6 proposed activity hubs are recommended. In addition, there are over 125 potential implementation partners recommended for consideration of advancing the recommendations of the plan.

Potential demonstration projects, which may be more readily achievable with fewer challenges to overcome for implementation, must achieve the following criteria:

- Create momentum for future expansion of the greenways system;
- Be destination-oriented;
- Attract both local and regional use/attention; and
- Increase awareness of the presence and benefits of local natural resources.

Demonstration projects should also have the potential to generate positive economic impacts and target a large user base.

A list of ten high priority demonstration projects, developed using the criteria above, was presented at public meetings held in September of 2011, and the public concurred with the potential projects that were identified. They include:

- | Potential Demonstration Projects                     |
|--|
| Overland Trails Maintenance Improvements             |
| East & West Side Overland Trail Loops                |
| Chautauqua Institution to Barcelona Harbor Trail     |
| Pennsylvania State Line to Falconer Trail            |
| Growing Mountain Biking in Chautauqua County         |
| Chadakoin Park Trail (Jamestown Riverwalk Extension) |
| Friends of Chautauqua Greenways                      |
| Sherman Trail Town Study                             |
| Equestrian Trail System Expansion                    |
| Chautauqua County ATV Park                           |

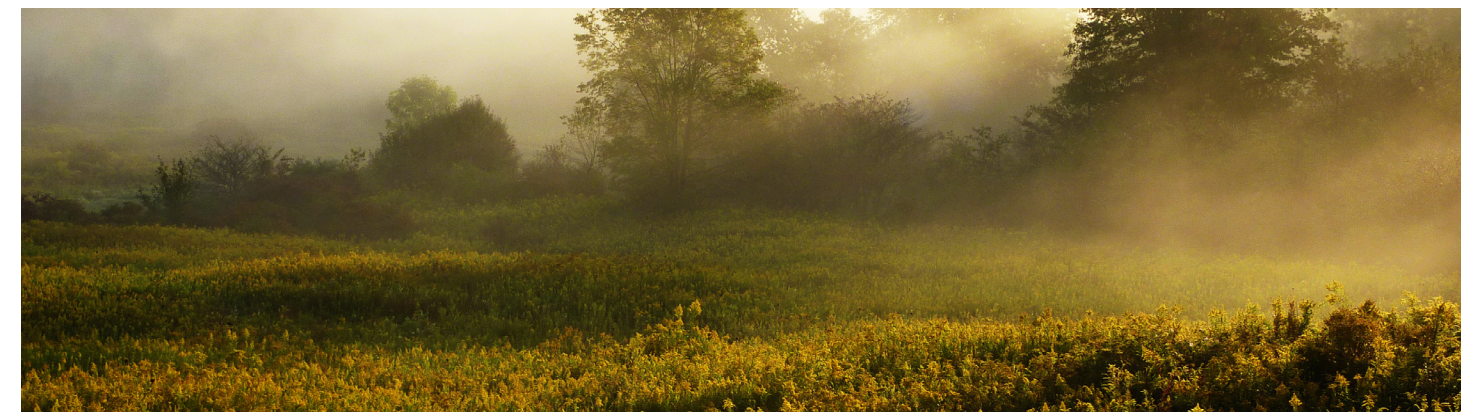
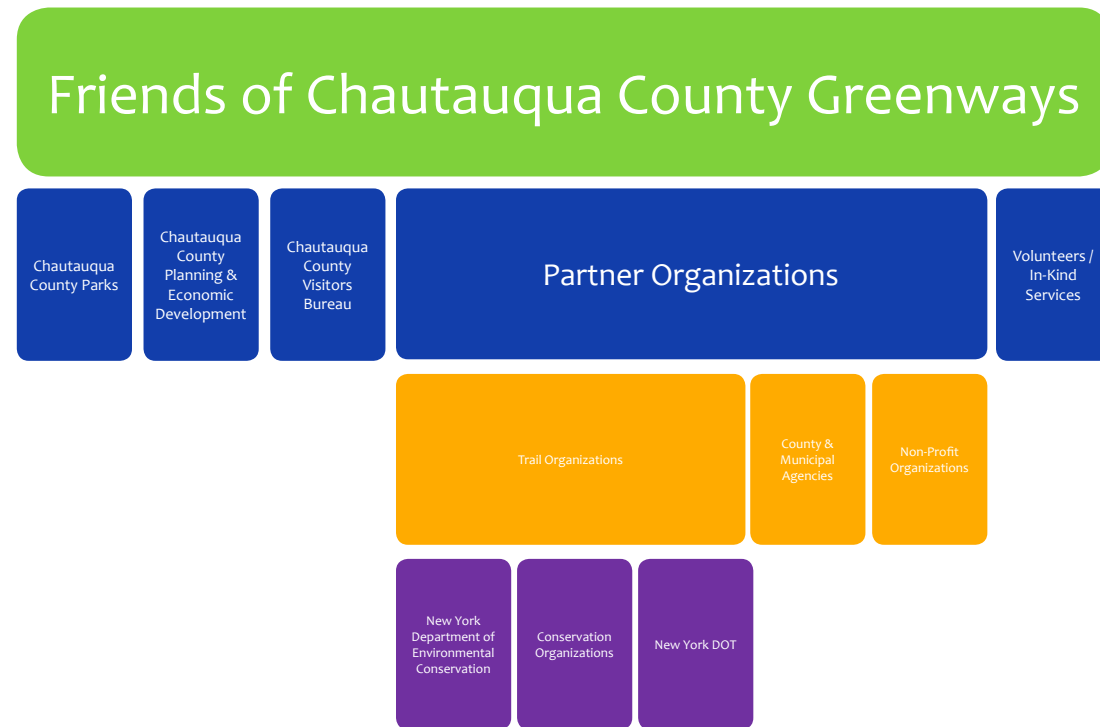


Photo Credit: Mark Geise

## MANAGEMENT STRUCTURE

Everyone acknowledges public resources are continually being stretched to provide even basic services. Through this planning process, stakeholders determined a grass-roots effort is necessary to advance greenways within the County. Therefore, the “Friends of Chautauqua Greenways” (FCG) has been formed as an advocacy group. FCG will coordinate and partner with state, county, municipal, and private sector agencies and organizations to advance greenway implementation strategies within Chautauqua County. The proposed structure of the FCG is as follows:



The Chautauqua County Greenway Plan, as a working document, contains Action Plans with strategies to implement each of the seven goals and prescribes an action plan identifying the steps necessary to reach each goal. Each action plan contains descriptions of the implementation strategies, identification of each strategies’ priority (Immediate - within 12 months, Short - 1 to 3 years, Medium - 3 to 5 years, or Long - 5 years plus), and identification of the agency(ies) and/or organization(s) responsible for completing the strategy.

Throughout the course of this study, over 125 potential partners were identified who may provide direct or indirect assistance/partnerships in advancing greenways and trails in Chautauqua County. They include agencies and organizations from the following sectors:

- State Government
- County Government
- Municipal Government
- Trail Organizations
- Conservation Organizations
- Snowmobile Organizations
- Bicycling/Mountain Biking Organizations
- Foundations
- Equestrian Organizations
- Boating Organizations
- Fish and Game Organizations
- Birding Organizations
- Watershed Organizations
- Colleges and Universities
- Private Sector (businesses)

These partner organizations can potentially perform a role in planning, implementing, developing, managing, operating, maintaining, and marketing greenways and trails in Chautauqua County.

## OUR MISSION (What we do, where we do it, and who we do it for)

Chautauqua County’s rich system of four season greenways positively impacts the economies of our communities. The recommendations proposed in the Greenway Plan create a new enthusiasm for active living and healthy lifestyles; promote outdoor activities; improves our quality of life within Chautauqua County; act as a catalyst for economic development related to outdoor living; and establish Chautauqua County as a destination center for outdoor adventure and lifelong learning opportunities.

## OUR VISION (How we see ourselves 5 to 10 years from now)

Residents and visitors will have access to an interconnected system of greenways that cater to bird watchers, cyclists, kayakers, equestrians, snowmobile riders, and all other outdoor enthusiasts. Some greenway lands are public, others are private, and still others are a combination, all nurtured by public/private partnerships.

Our greenways will connect forests, parks, open spaces, and main streets, and will serve as a destination center for outdoor adventure and lifelong learning opportunities for residents and visitors alike. Our greenways will be enhanced by interpreting our recreation, cultural, and historic assets. Greenway corridors will not only traverse the country-side, but will also connect our towns and main streets where trail users can access the goods and services they desire. Equally important, we will work with our business communities to capitalize on the economic and tourism development potential greenways create.

Natural system greenway corridors will conserve, protect, manage, and restore our landscapes, ecosystems, and habitats through strong public and private partnerships. At the same time, implementation of recommended actions will effectively conserve our sensitive waterways and aquifers by establishing buffers of green open space and working landscapes along them. Greenways will also assist in managing stormwater and will biologically filter run-off water before returning it to the County’s waterways and aquifers, thereby improving water quality, reducing erosion, and providing ecological benefits.

Conservation and recreation organizations, public agencies, landowners, private sector companies, and dedicated individuals will support the county’s greenway initiatives by developing strong partnerships for mutual benefit. Respect for private property rights, local community concerns and public lands are hallmarks of this greenways effort.



Photo Credit: Michael Kotyk

## OUR GOALS *(Specific ideas about how we will accomplish our mission & vision)*

To achieve the vision for greenways in Chautauqua County, seven goals were established:

- Goal One: Active Living/Alternative Transportation Goals:** Work corroboratively with organizations to complete mutually beneficial projects; Integrate trails and active living into the everyday life of the county’s residents; create paved shared use paths as alternative active transportation and recreation corridors; and, advocate and promote Complete Streets, Safe Routes to Schools, and Walkable Community concepts.
- Goal Two: Conservation of Natural Resources:** Foster public/private partnerships for the conservation of natural resources; educate decision-makers on the benefits of conserving natural resources; educate the public on the benefits of conserving natural resources; and, develop and promote model conservation ordinances and easement agreements.
- Goal Three: Connectivity and Trail Development:** Maintain and upgrade the existing trail system; evaluate land/water based trails; , create looped trail systems; connect urban areas to the countryside; establish a network of cross-country skiing, winter hiking, and snowshoeing trails; connect trails to housing so that homeowners have access to the trails and other recreation resources; plan, design, and implement trail mapping, electronic wayfinding and signage programs; provide trails for all users: hikers, bikers, equestrians, canoers/kayakers, snowmobilers, and atvers; establish inter-county and inter-state connections; evaluate the feasibility of providing camping opportunities to accommodate the use of long distance trails and green space; retain property and/or purchase additional property for trail and trailhead development; reduce maintenance requirements by adopting, educating, and promoting a ‘Leave No Trace’ philosophy; and integrate industrial, commercial, and residential development initiatives with the county’s greenway network.
- Goal Four: Management, Operations, and Maintenance:** Develop a new model for creating, maintaining, and advocating for resources for trails, parks, and waterways; identify dedicated funding sources to sustain the greenway system; evaluate current maintenance practices and institute sustainable management/maintenance practices; improve maintenance of the existing trail network; evaluate and improve the maintenance of existing water trail network; improve intergovernmental cooperation for the water trails between municipalities, counties, and states; and, codify management, operations, and maintenance policies and procedures.
- Goal Five: The World’s Learning Center:** Integrate active learning opportunities with active living opportunities; promote environmental education; communicate the history of the landscape and the communities; and promote opportunities for learning within the County.



Photo Credit: Mark Geise

## High Priority Recreation Greenway Corridors

27) Development of a Trail from Clymer to Findley Lake, 28) Development of an On-Road Trail from Jamestown to East of Frewsburg, 29) Evaluation of the Cassadaga Creek Water Trail, 30) Development of a Trail from Findley Lake to Sherman Sherman, 31) Development of a Trail from Clymer to the South end of the Westside Overland Trail, 32) Development of a Trail from Cassadaga Lake to Forestville, 33) Development of a Trail from Dunkirk to Sunset Bay, 34) Development of a Trail from Martin Road in Jamestown to Frewsburg, 35) Development of a Trail from Maple Springs to Cassadaga , 36) Development of a Trail from Dunkirk to Forestville, 37) Development of a Rail Trail from Forestville, East to Cattaraugus County, 38) Development of a Trail from Brocton to Bear Lake, and 39) Development of a Trail from Forestville to Irving.

## Trail Towns

One of the goals of Chautauqua’s Greenway Plan is to attract and invite trail users to main street districts throughout the county where they can find the goods and services they need, thus encouraging economic activity along the main streets. Many villages and towns are currently positioned to capitalize on a trail town concept to maximize the economic benefits that are sure to result from trail development.



Photo Credit: Michael Kotyk

Trail town strategies include:

- Enticing trail users to get off the trail and into your town;
- Welcoming trail users to your town by making information about the community readily available at the trail;
- Making strong and safe connections between your town and the trail;
- Educating local businesses on the economic benefits of meeting the needs of trail tourists;
- Recruiting new businesses or expanding existing ones to fill gaps in the goods and services that trail users need; promoting the “trail-friendly” character of the town; and,
- Working with neighboring communities.

To be considered as a potential Trail Town, the Greenway Plan steering committee recommended that proposed Trail Towns possess three of the four following goods/services: 1) Main Street, 2) Food, 3) Lodging, and 4) Fuel. Municipalities that can provide only two of the four components have been classified as Major Hubs, with the remaining “Towns” classified as Hubs.

Proposed Trail Towns include:

- |                |               |             |                 |
|----------------|---------------|-------------|-----------------|
| • Bemus Point  | • Dunkirk     | • Gerry     | • Panama        |
| • Brocton      | • Falconer    | • Irving    | • Sheridan      |
| • Cassadaga    | • Forestville | • Jamestown | • Sherman       |
| • Cherry Creek | • Fredonia    | • Lakewood  | • Sinclairville |
| • Clymer       | • Frewsburg   | • Mayville  | • Westfield     |

## NATURAL SYSTEMS GREENWAY CORRIDORS

The greenway planning process resulted in recommending the conservation of twenty natural systems greenway corridors. Further, each corridor was prioritized as follows:

### Exceptional Priority Natural System Greenway Corridors

- 1) French Creek Greenway Corridor, 2) Cassadaga Greenway Corridor, 3) Conewango Greenway Corridor, 4) Canadaway Creek Greenway Corridor, 5) Chautauqua Lake Greenway Corridor, 6) Chautauqua Creek Greenway Corridor.

### Significant Priority Natural System Greenway Corridors

- 7) Cherry Creek Greenway Corridor, 8) Twentymile Creek Greenway Corridor, 9) Goose Creek Greenway Corridor, 10) Bear Lake Outlet Greenway Corridor, 11) Little Brokenstraw Creek Greenway Corridor, 12) Stillwater Creek Greenway Corridor, 13) Brokenstraw Creek Greenway Corridor, and 14) Lake Erie Greenway Corridor.

### High Priority Natural System Greenway Corridors

- 15) Clear Creek Greenway Corridor, 16) Findley Lake Greenway Corridor, 17) Silver Creek Greenway Corridor, 18) Walnut Creek Greenway Corridor, 19) Prendergast Creek Greenway Corridor, and 20) Cattaraugus Creek Greenway Corridor.

## RECREATION GREENWAY CORRIDORS

The greenway planning process resulted in recommending expanding, enhancing and developing thirty-nine recreation greenway corridors. Further, each corridor was prioritized as follows:

### Exceptional Priority Recreation Greenway Corridors

- 1) Enhancement of the Conewango Creek Water Trail, 2) Improvements to the Chautauqua County Rail Trail, 3) Development of a Rail Trail from Corry, PA to Clymer, 4) Development of a Rail Trail from Clymer to Sherman, 5) Development of a Rail Trail from Frewsburg to North Warren, PA, 6) Enhancement of the Great Lakes Seaway Trail Scenic Byway, and 7) Conversion of the Portage Trail to a Rail Trail.

### Significant Priority Recreation Greenway Corridors

- 8) Development of an On-Road Bicycle Trail from Ashville to Jamestown, 9) Extension of the Equestrian Trail Network, 10) Development of a Southern Extension of the East Side Overland Trail, 11) Development of a Rail Trail from Mayville to Westfield Trail, 12) Development of a Rail Trail from Frewsburg to Falconer, 13) Development of a Rail Trail from Falconer to Sinclairville, 14) Development of a Rail Trail from Sinclairville to Fredonia, 15) Creation of Hiking Trail Loops at the North and South ends of the Westside Overland Trail, 16) Enhancement of the Chadakoin River Water Trail, 17) Development of an On-Road Trail from Westfield to Barcelona Harbor, 18) Development of a Rail Trail from Fredonia to Dunkirk, 19) Extension of Rail Trail from Brocton to Dunkirk, 20) Development of Erie Lake Front Water Trail, 21) Creation of Hiking Trail Loops at the North and South ends of the Eastside Overland Trail, 22) Development of a Rail Trail from Bear Lake, PA to Ashville, 23) Development of a Trail from Sherman to the Westside Overland Trail - Middle Section, 24) Development of a Rail Trail from Jamestown to Mayville, 25) Development of a Trail from Westfield to Barcelona Harbor, and 26) Development of a Trail from Sunset Bay to Irving.



Photo Credit: Mark Geise

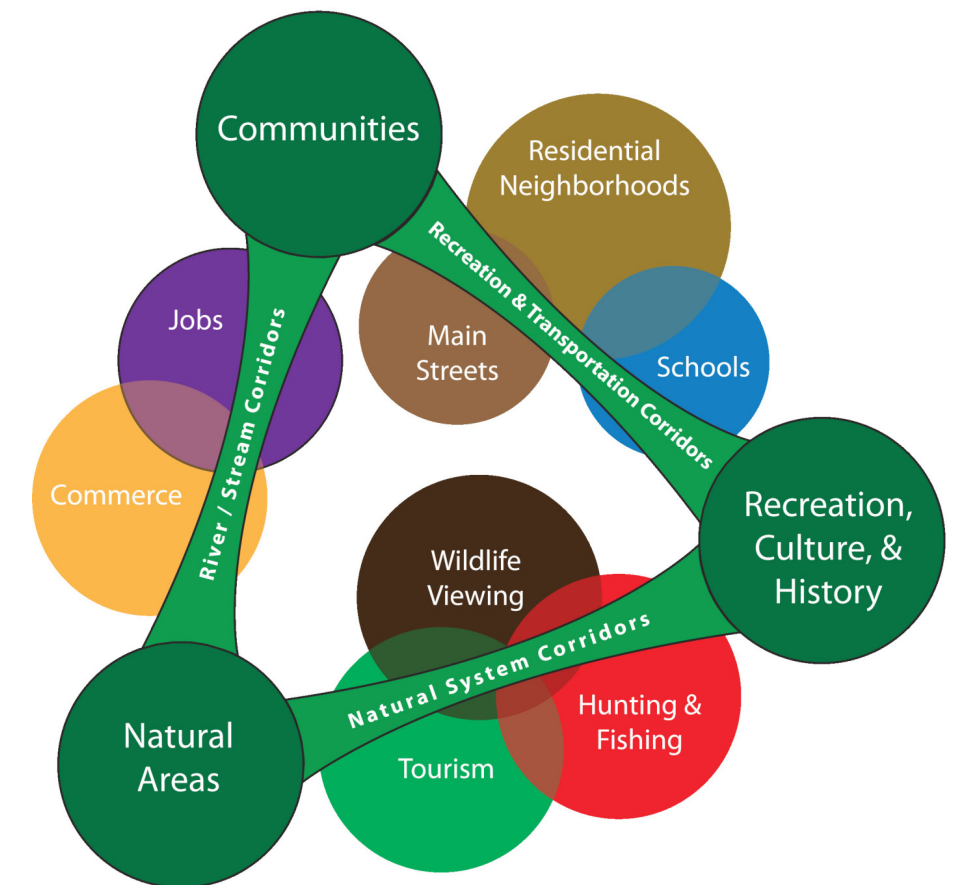
**Goal Six: Leadership:** Create a Friends of Chautauqua Greenways stakeholder group to establish goals and advocate for resources; formalize delivery and implementation strategies of greenways development between the County and its partners; pursue resources corroboratively; foster partnerships between conservation and recreation organizations, public agencies, landowners, private sector companies, local municipalities, and dedicated individuals; promote, educate, and facilitate Trail Town concepts in local business districts; and, promote, educate, and facilitate Activity Hub concepts to identified landowners.

**Goal Seven: Marketing & Tourism:** Promote Chautauqua County's outdoor opportunities locally, regionally, and nationally; promote an enhanced water trail network; establish unified standards for trails through signage and marketing efforts; cross promote greenways and trails with other tourism promotion activities; collaborate with regional providers to market to broader audience; evaluate and pursue opportunities to partner promotional efforts with the private sector; and develop a centralized database of active recreation opportunities and promote them through social media and an interactive website.

## THE STRUCTURE OF THE NETWORK

The framework for Chautauqua County's greenways begins with the natural systems greenways corridors that include forests, significant stream corridors, and wildlife habitats. Overlaying this natural systems greenways are the recreation greenway corridors, "hubs and spokes".

The "hubs" are significant destinations such as trail towns, parks and other important recreation areas. The "spokes" provide connections between the hubs. In many locations natural and recreation greenway corridors will co-exist, in other areas natural system corridors may be distinct from recreation corridors. Ultimately, the goal is to connect recreation and natural greenway corridors to locations where users can obtain the goods and services they desire while recreating in our greenways.



# Chautauqua County Greenway Trail Plan

## Recreation Greenways

### Exceptional Priority

- 1 Coneywango Paddle Trail
- 2 Chautauqua County Rail Trail
- 3 Corry to Clymer Rail Trail
- 4 Clymer to Sherman Rail Trail
- 5 Frewsburg to North Warren Trail
- 6 Great Lakes Scenic Byway
- 7 Portage Trail

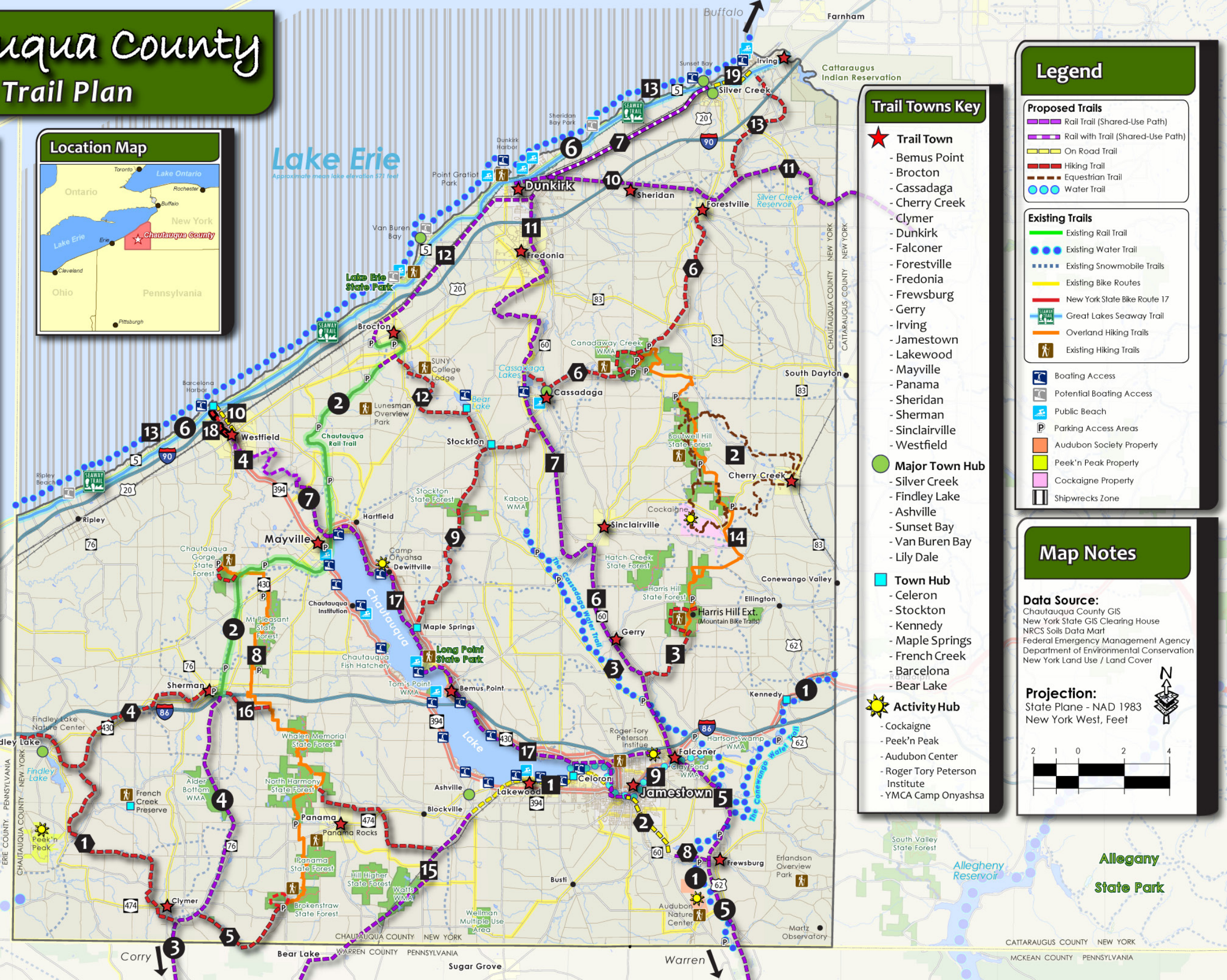
### Significant Priority

- 1 Ashville to Jamestown
- 2 Extension of Equestrian Trail Network
- 3 Lower East Side Overland Trail
- 4 Mayville to Westfield Rail Trail
- 5 Frewsburg to Falconer Rail Trail
- 6 Falconer to Sinclairville Rail Trail
- 7 Sinclairville to Fredonia Rail Trail
- 8 Fred Cusimano Westside Overland Trail
- 9 Chadokoin Paddle Trail
- 10 Westfield to Barcelona Harbor
- 11 Fredonia to Dunkirk Rail Trail
- 12 Brocton to Dunkirk Rail Trail
- 13 Erie Lake Front Paddle Trail
- 14 Earl Cardot Eastside Overland Trail
- 15 Bear Lake, PA to Ashville Rail Trail
- 16 Sherman to Westside Overland Trail
- 17 Jamestown to Mayville Rail Trail
- 18 Westfield to Barcelona Harbor-Hiking
- 19 Sunset Bay to Irving

### High Priority

- 1 Clymer to Findley Lake
- 2 Jamestown to West of Frewsburg
- 3 Cassadaga Creek Paddle Trail
- 4 Findley Lake to Sherman
- 5 Clymer to Westside Overland Trail
- 6 Cassadaga Lake to Forestville
- 7 Dunkirk to Sunset Bay
- 8 West of Frewsburg to Frewsburg
- 9 Maple Springs to Cassadaga
- 10 Dunkirk to Forestville
- 11 Forestville East Rail Trail
- 12 Brocton to Bear Lake, NY
- 13 Forestville to Irving

## Location Map



## Legend

- ### Proposed Trails
- Rail Trail (Shared-Use Path)
  - - - Rail with Trail (Shared-Use Path)
  - On Road Trail
  - Hiking Trail
  - - - Equestrian Trail
  - Water Trail
- ### Existing Trails
- Existing Rail Trail
  - Existing Water Trail
  - - - Existing Snowmobile Trails
  - Existing Bike Routes
  - New York State Bike Route 17
  - Great Lakes Seaway Trail
  - Overland Hiking Trails
  - Existing Hiking Trails
- ⚓ Boating Access
  - ⚓ Potential Boating Access
  - ⚓ Public Beach
  - P Parking Access Areas
  - Audubon Society Property
  - Peek'n Peak Property
  - Cockaigne Property
  - Shipwrecks Zone

## Trail Towns Key

- ★ **Trail Town**
  - Bemus Point
  - Brocton
  - Cassadaga
  - Cherry Creek
  - Clymer
  - Dunkirk
  - Falconer
  - Forestville
  - Fredonia
  - Frewsburg
  - Gerry
  - Irving
  - Jamestown
  - Lakewood
  - Mayville
  - Panama
  - Sheridan
  - Sherman
  - Sinclairville
  - Westfield
- **Major Town Hub**
  - Silver Creek
  - Findley Lake
  - Ashville
  - Sunset Bay
  - Van Buren Bay
  - Lily Dale
- **Town Hub**
  - Celeron
  - Stockton
  - Kennedy
  - Maple Springs
  - French Creek
  - Barcelona
  - Bear Lake

- ☀ **Activity Hub**
- Cockaigne
- Peek'n Peak
- Audubon Center
- Roger Tory Peterson Institute
- YMCA Camp Onyashsa

## Map Notes

**Data Source:**  
 Chautauqua County GIS  
 New York State GIS Clearing House  
 NRCS Soils Data Mart  
 Federal Emergency Management Agency  
 Department of Environmental Conservation  
 New York Land Use / Land Cover

**Projection:**  
 State Plane - NAD 1983  
 New York West, Feet

