

Chautauqua County Parcel Viewer 2.0

Instruction Guide

Contents

Frequently Asked Questions	3
Why can't I see property lines?	3
How do I view orthos?	3
How do I search by owner name?.....	3
I click on a parcel and I don't see the parcel information. Where is it?	3
I need more help! Who do I contact?	3
Icon Definition.....	4
Legend Icon	4
Tax ID Search Icon.....	4
Property Owner Search Icon.....	4
Layer List Icon.....	4
More Tools Icon	4
Close Left Pane Icon.....	4
Print Icon.....	4
Base Map Selection Icon	4
Share Icon	4
Basic Navigation.....	5
Pan or Move.....	5
Zoom In	5
Zoom Out	5
Default Extent	5
My Location.....	5
Previous and Next Extent Icons	5
Searching.....	6
Search by Address.....	6
Search by Tax ID.....	8
Search By Owner Name	10
Layers	12
Owners.....	12
Tax Parcels	13
Parcels.....	13

Chautauqua County Parcel Viewer 2.0

Instruction Guide

CCIDA Developable Sites.....	14
Annotation_PV.....	14
Boundaries	15
Municipal Boundaries	15
Fire Districts	15
School Districts.....	16
Agricultural Districts.....	16
Address Points.....	17
Tax_Map_Layers	17
Elevation Contours – 5 Foot.....	18
World Hybrid Overlay	18
World Imagery	19
Tax Parcel Information.....	20
Tax Parcel Attribute Table.....	20
Parcel Tax Information.....	21
Parcel Ownership History.....	21
Property Information Details	22

Chautauqua County Parcel Viewer 2.0

Instruction Guide

Frequently Asked Questions

Why can't I see property lines?

For parcel lines to appear, you must have the Parcels layer selected (this is selected by default) AND zoom into the map to a level where the parcel lines will appear (generally 1in = 0.2mi).

How do I view orthos?



To view orthos, click the layers icon, and then select the World Imagery layer.

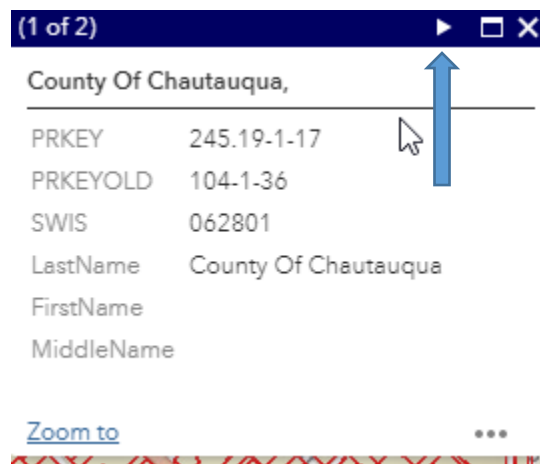
How do I search by owner name?



Click the Property Owner Search Icon, and then enter the name and click the green Apply button

I click on a parcel and I don't see the parcel information. Where is it?

If you click on a parcel and see the pop up, you might have to click the Next Page icon to view more information.



I need more help! Who do I contact?

Submit your question from the following form: <https://chqgov.com/contact>

Chautauqua County Parcel Viewer 2.0

Instruction Guide

Icon Definition

Legend Icon



. Opens the legend indicating what lines and boundaries indicate.

Tax ID Search Icon



. Opens the property search by Tax ID text box.

Property Owner Search Icon



. Opens the property search by Owner pane.

Layer List Icon



. Opens the list of layers available.

More Tools Icon



. Opens the list of available tools including measurement, drawing, coordinate conversion, and special parcel queries.

Close Left Pane Icon



. Located at the bottom of the left pane. Click to close the left pane if it is open.

Print Icon



. Located in the upper right corner of the map. Click to print.

Base Map Selection Icon



. Located in the upper right corner of the map. Click to select a different base map.

Share Icon



. Located in the upper right corner of the map. Click to copy information on how to share the map.

Chautauqua County Parcel Viewer 2.0


Instruction Guide

Basic Navigation


Pan or Move

To pan or move the map, click and drag the map with your pointing device.


Zoom In

Click the Zoom In icon - , double click on the map area, or use a mouse-scrolling wheel.


Zoom Out

Click the Zoom Out icon - , or use a mouse-scrolling wheel.

Default Extent

Click the Default Extent icon -  to return to the wide view of the entire county

My Location

Zoom into your current location by clicking the My Location icon - 

Previous and Next Extent Icons



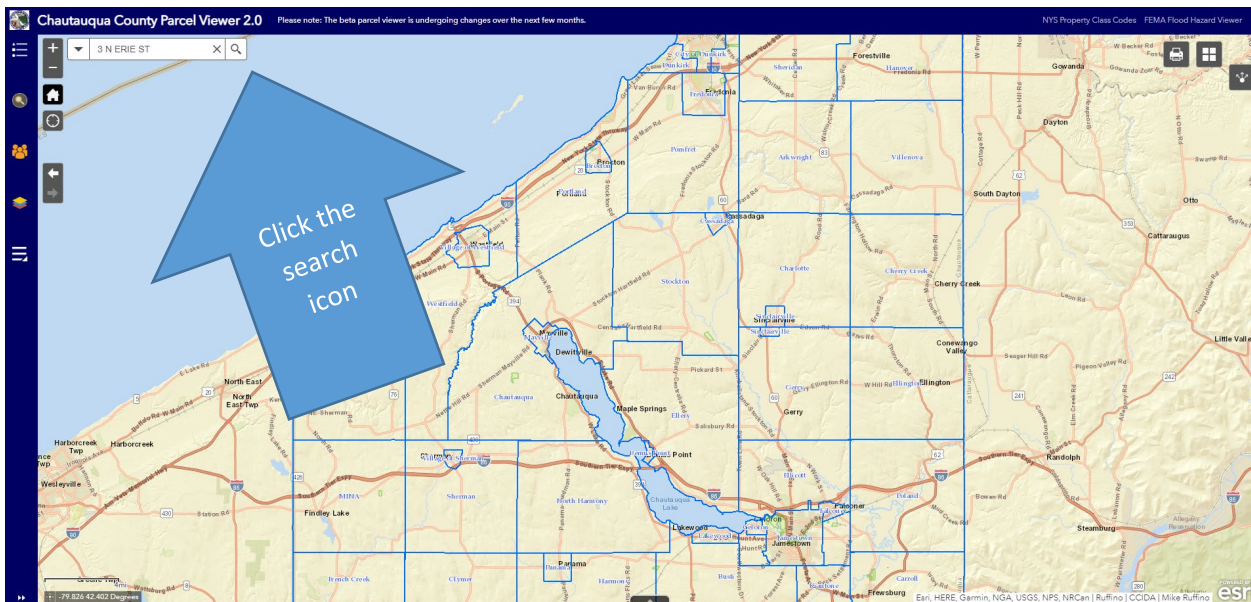
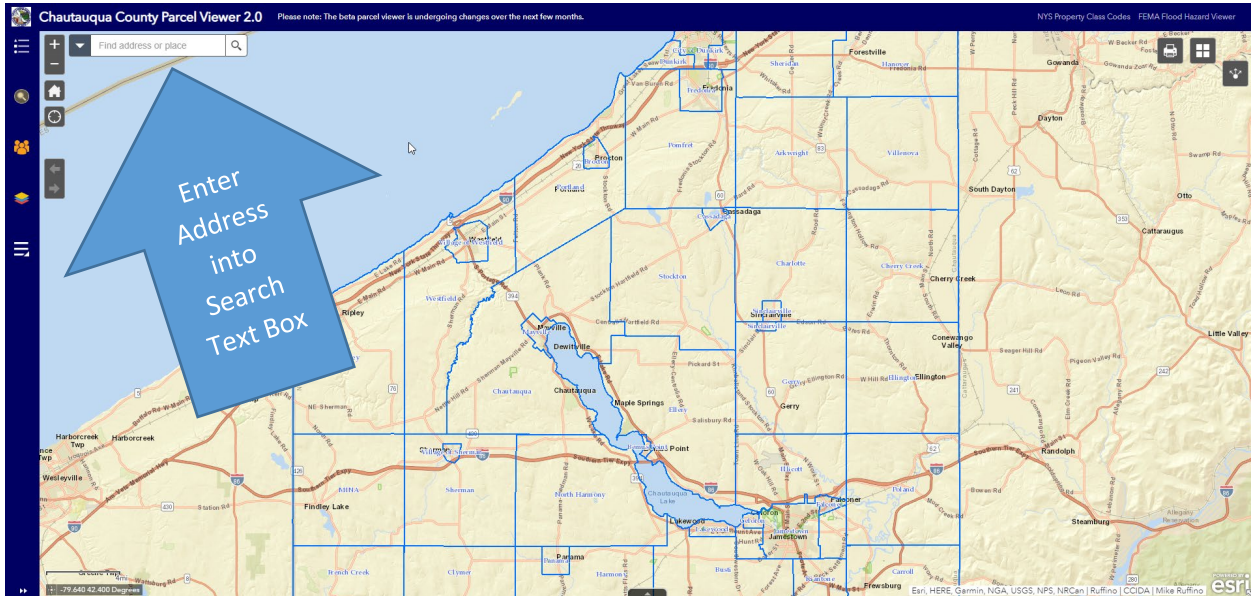
Use these icons to toggle between your previous and next zoom extent views.

Chautauqua County Parcel Viewer 2.0

Instruction Guide

Searching

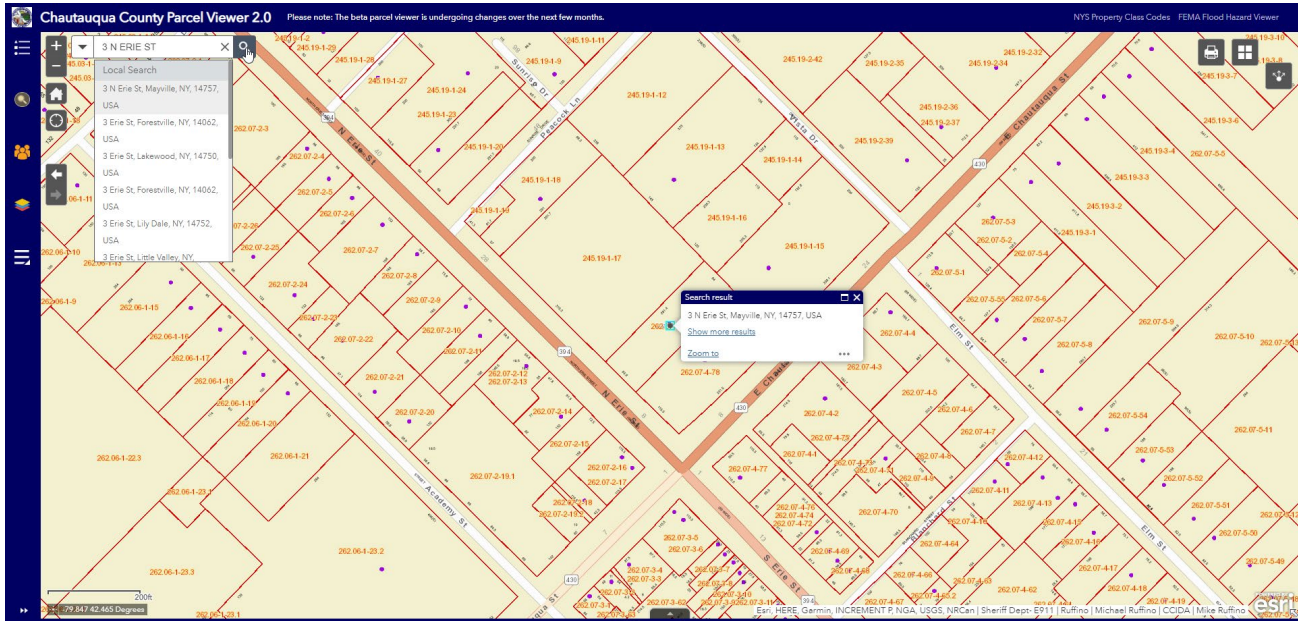
Search by Address



If found, the map will automatically zoom to the address, or provide options close to your search entry.

Chautauqua County Parcel Viewer 2.0

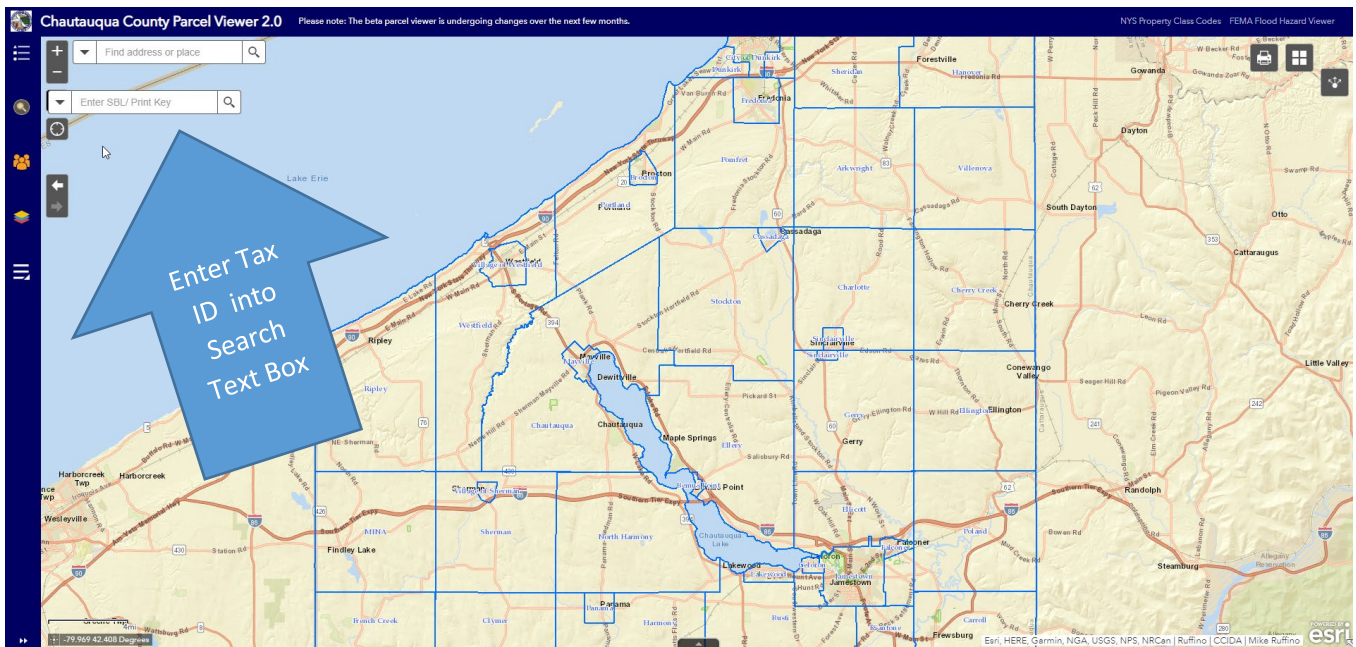
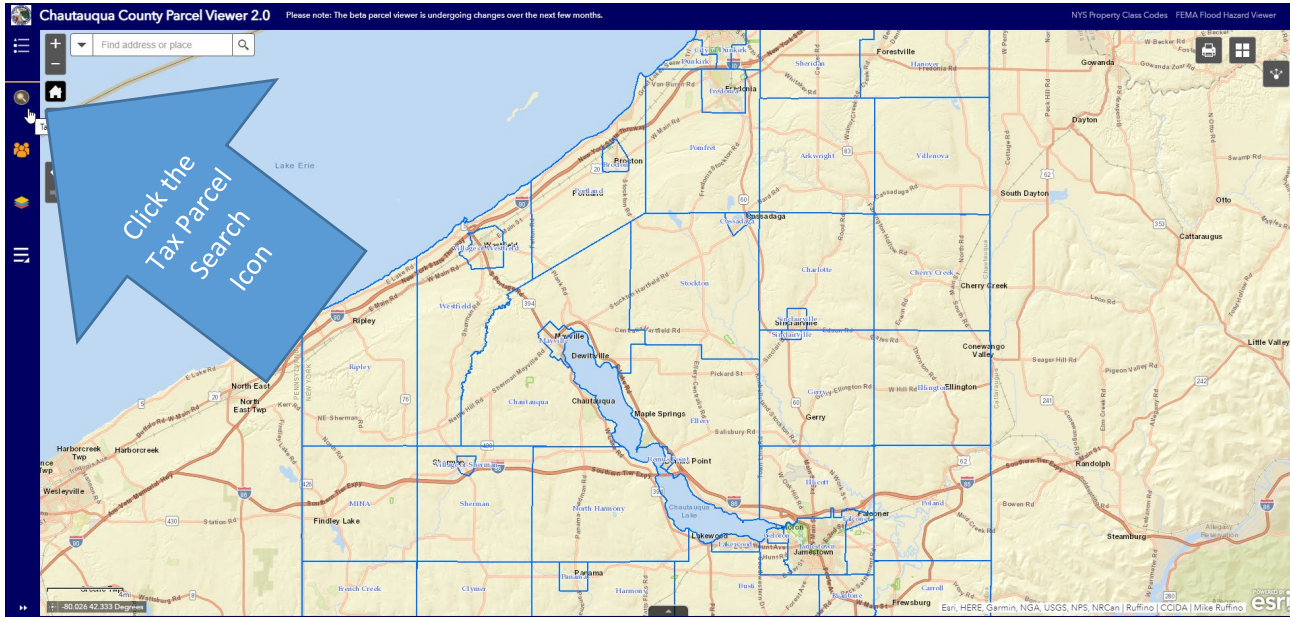
Instruction Guide



Chautauqua County Parcel Viewer 2.0

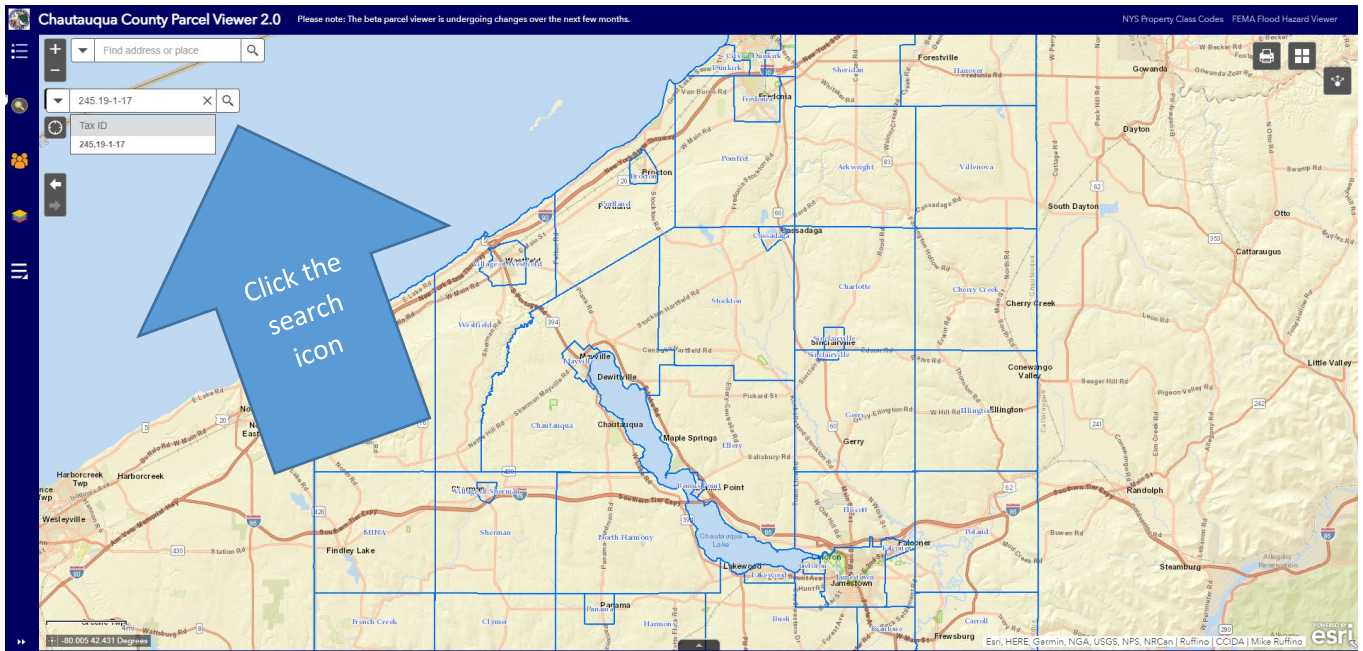
Instruction Guide

Search by Tax ID

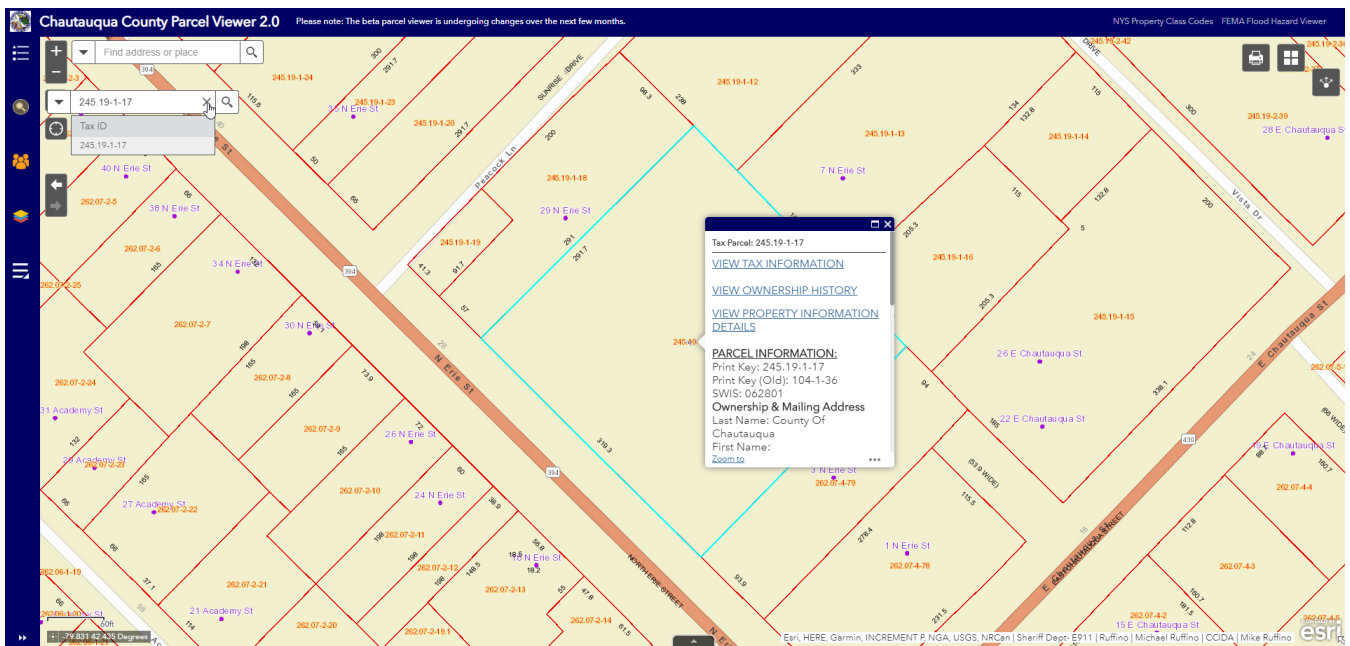


Chautauqua County Parcel Viewer 2.0

Instruction Guide



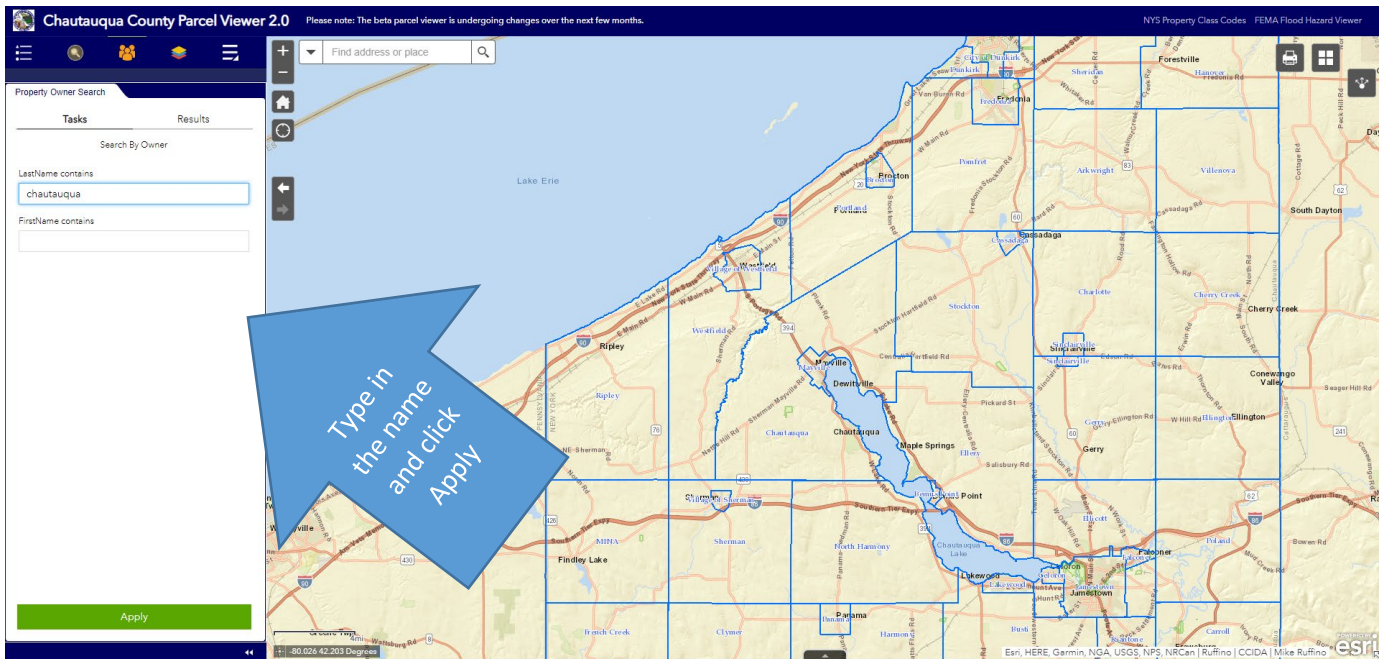
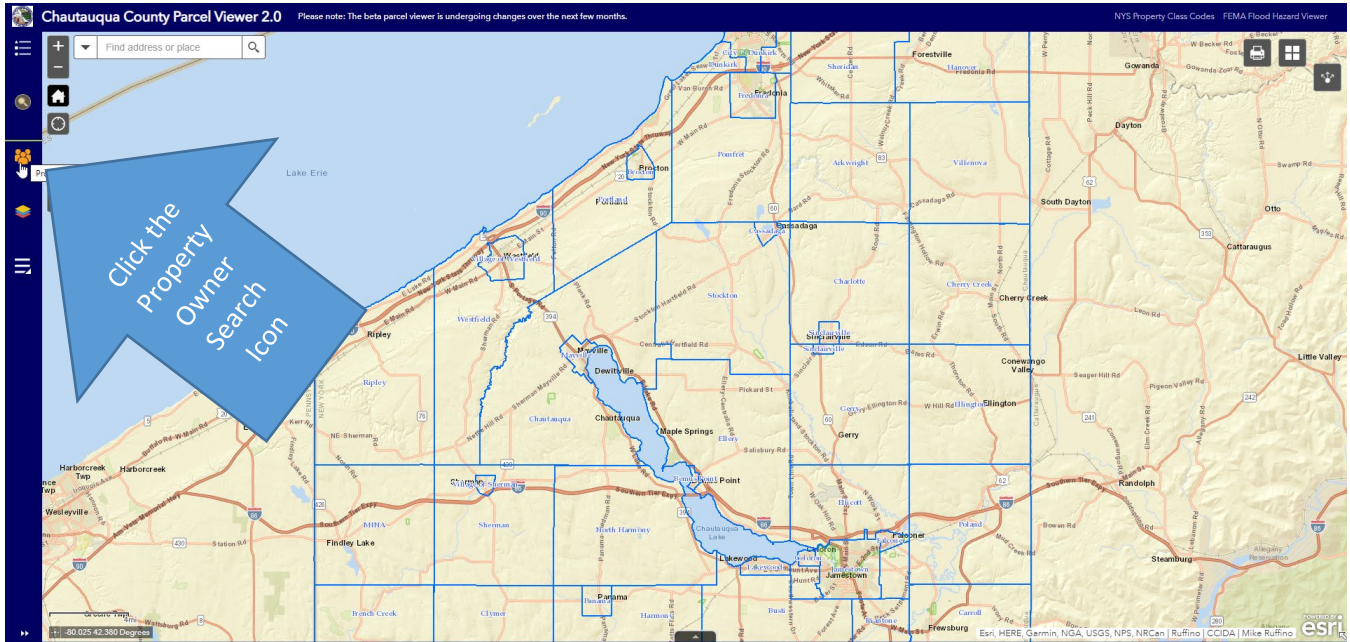
If found, the map will automatically zoom to the address, or provide options close to your search entry.



Chautauqua County Parcel Viewer 2.0

Instruction Guide

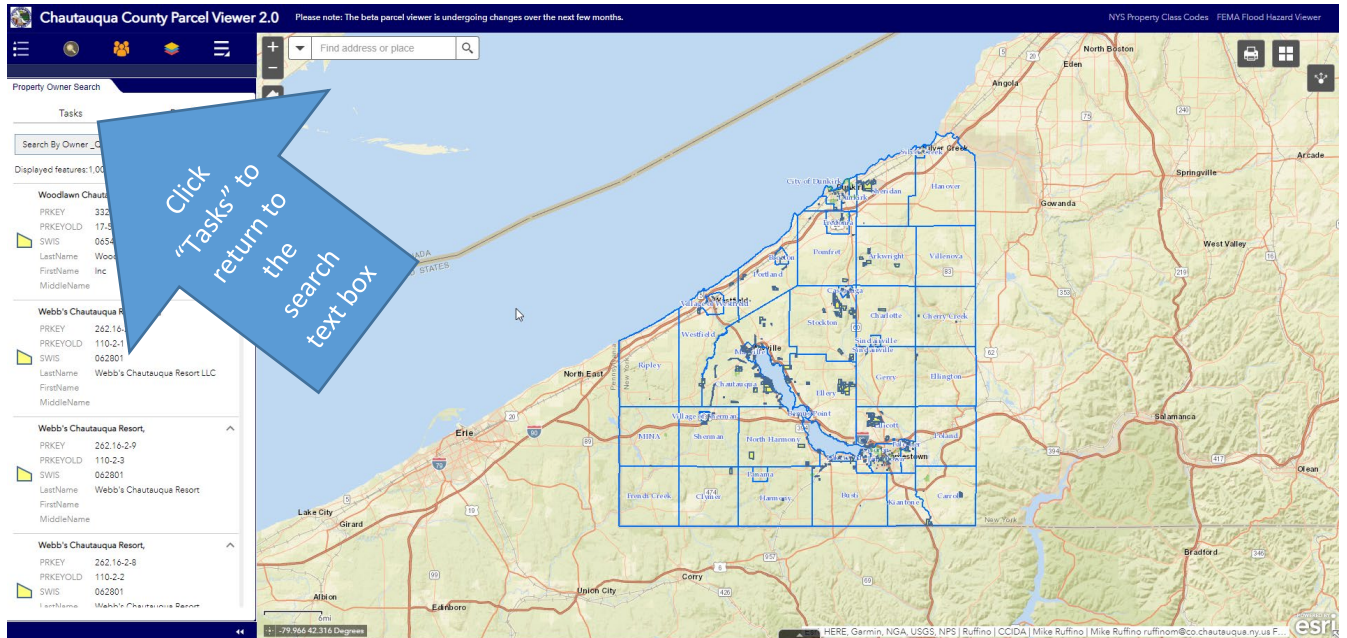
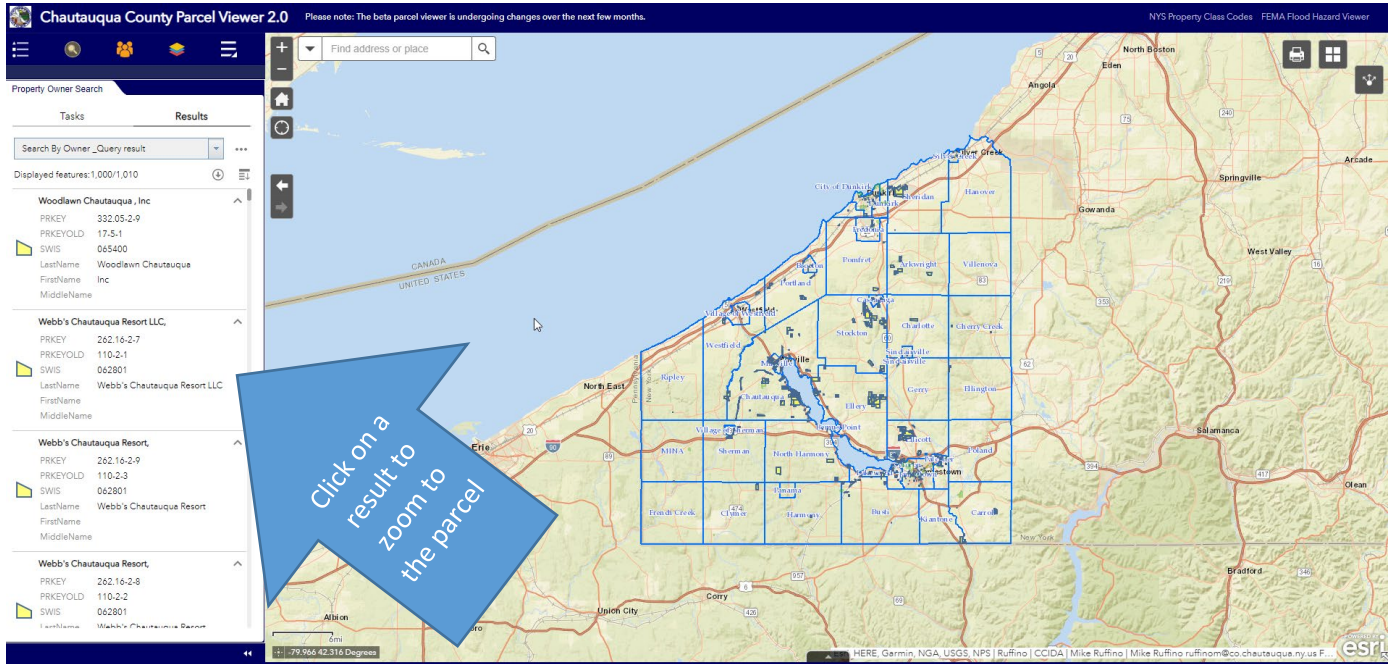
Search By Owner Name



A list of matching results will appear along with their parcels outlined in the map.

Chautauqua County Parcel Viewer 2.0

Instruction Guide



Chautauqua County Parcel Viewer 2.0

Instruction Guide

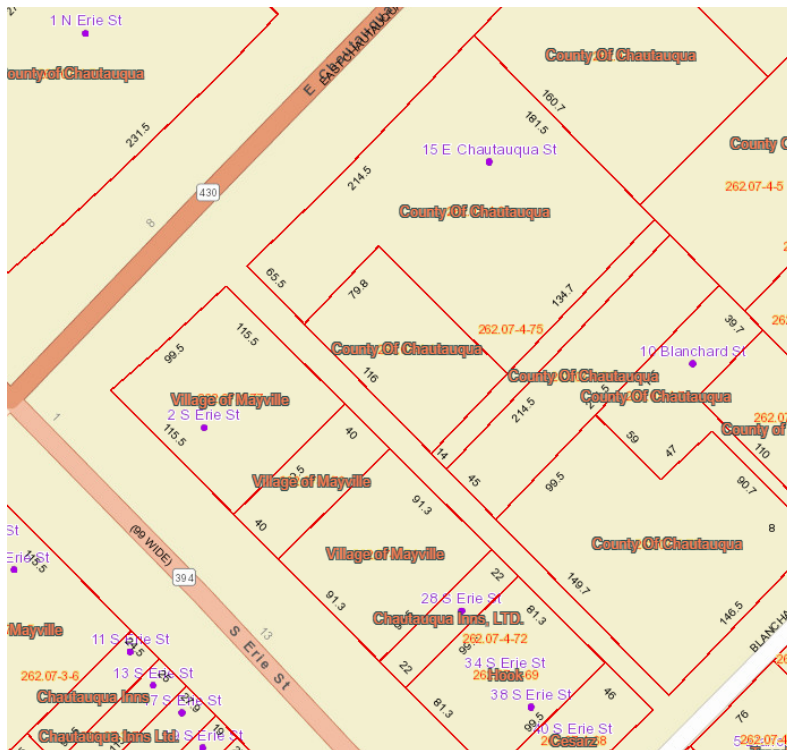
Layers



Click the Layers Icon to display the list of available layers.

Owners

The Owners layer will display the owner's last name on each parcel. You must zoom in until you see parcel boundaries for the Owner names to appear. It is OFF by default.

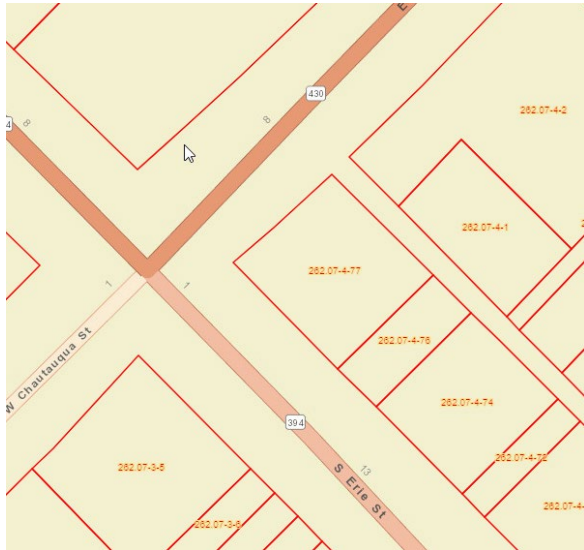


Chautauqua County Parcel Viewer 2.0

Instruction Guide

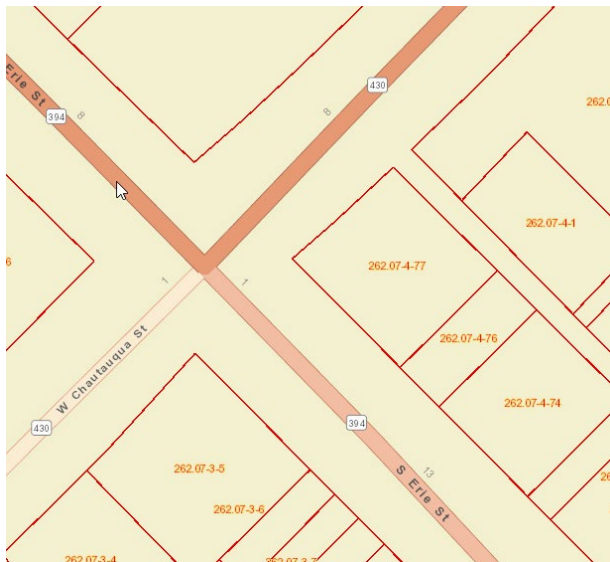
Tax Parcels

The Tax Parcels layer will display tax parcel boundaries in red outline. You must zoom in to a minimum extent in order for the boundaries to appear. It is OFF by default.



Parcels

The Parcels layer is similar to the Tax Parcels Layer. You must zoom in to a minimum extent in order for the parcels to appear. It is ON by default.



Chautauqua County Parcel Viewer 2.0

Instruction Guide

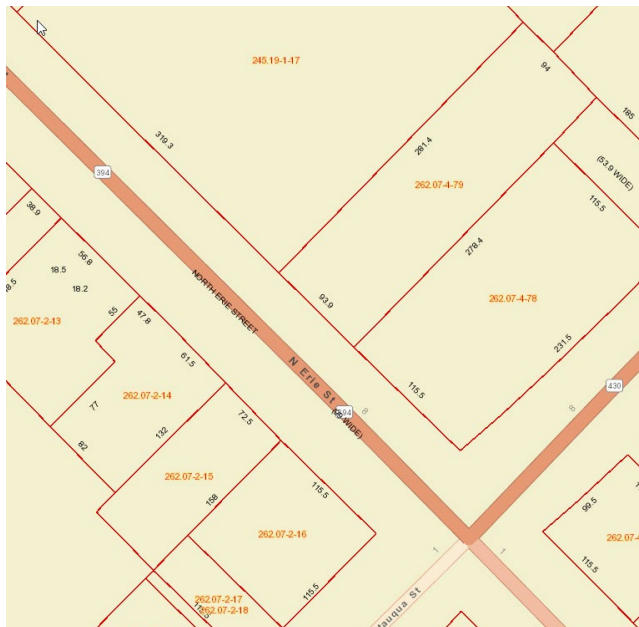
CCIDA Developable Sites

This layer highlights parcels that are currently available for industrial development by the Chautauqua County Industrial Development Agency (IDA). It is ON by default.



Annotation_PV

Annotation_PV options are available under this heading: 50, 100, 200, and 400 Scale. You must zoom in to a minimum extent in order for the parcels to appear. It is ON by default.



Chautauqua County Parcel Viewer 2.0

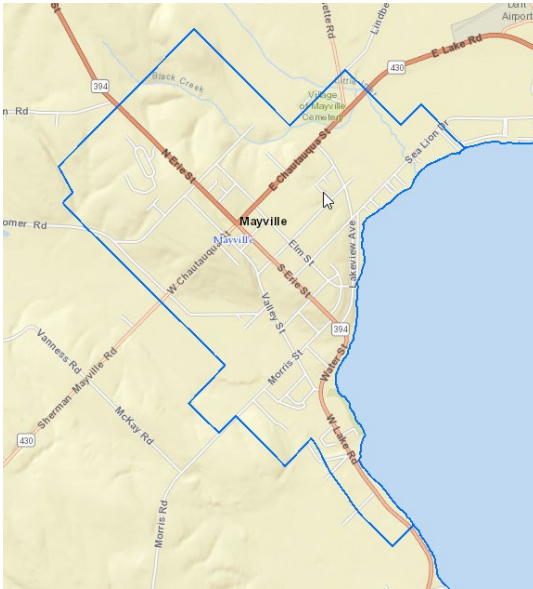
Instruction Guide

Boundaries

Boundaries layer has multiple options to display boundary lines.

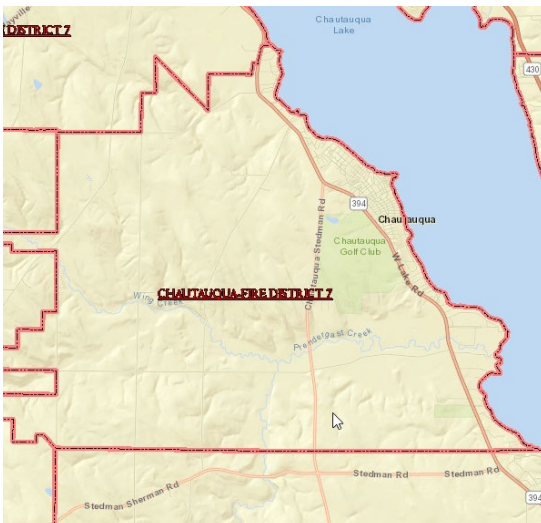
Municipal Boundaries

City, town, and county boundaries. It is ON by default.



Fire Districts

`GIS.GISOWNER.FireDistrictPolygon` will display Fire District boundaries. It is OFF by default.

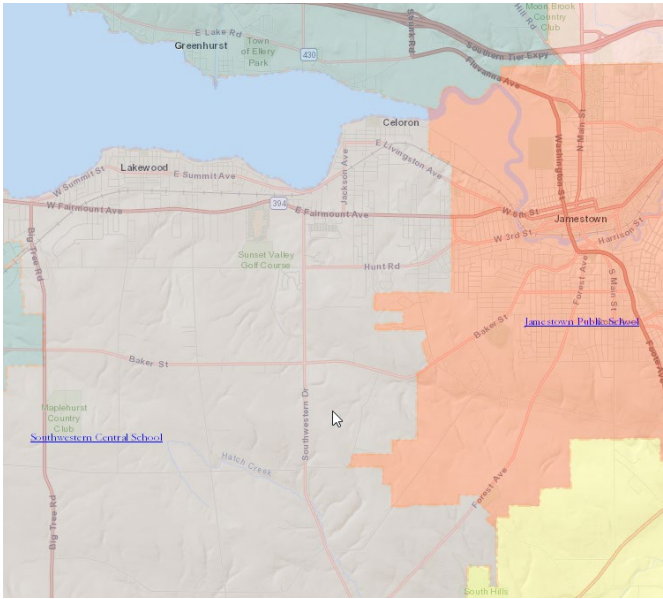


Chautauqua County Parcel Viewer 2.0

Instruction Guide

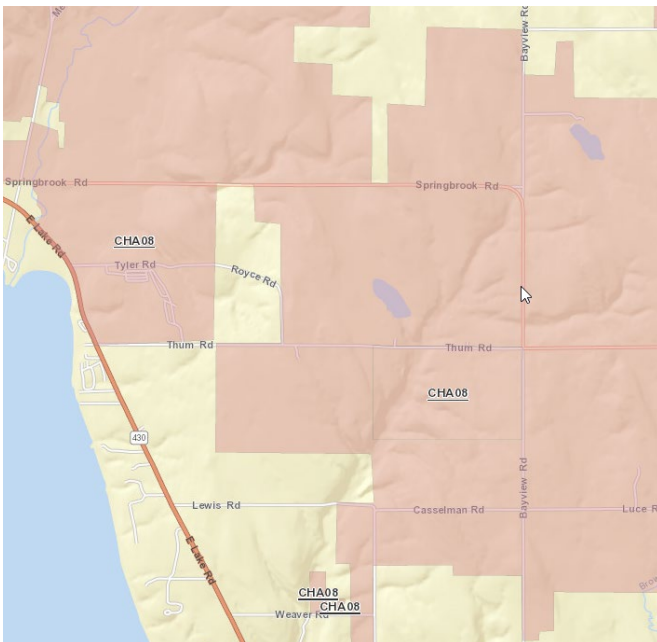
School Districts

`GIS.GISOWNER.SchoolDistrictPolygon` will display School District boundaries. It is OFF by default.



Agricultural Districts

Agricultural Districts will display boundaries of agricultural districts. It is OFF by default.

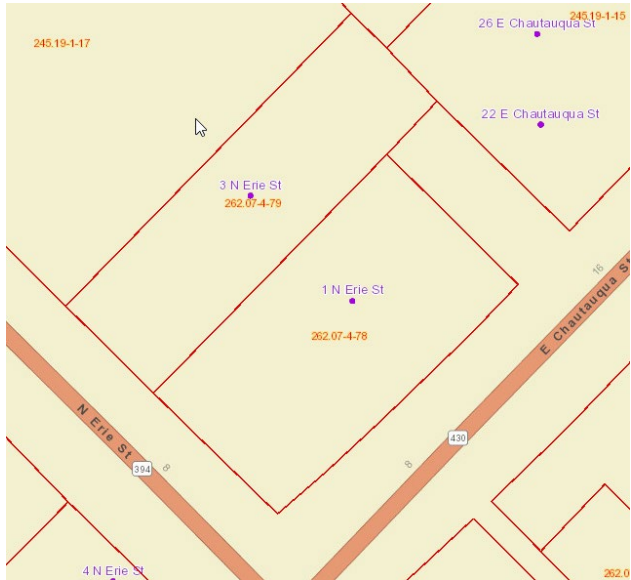


Chautauqua County Parcel Viewer 2.0

Instruction Guide

Address Points

The Address Points layer will display the street address of a particular parcel. You must zoom in to a minimum extent in order for the parcels to appear. It is ON by default.



Tax_Map_Layers

Tax Map Layers layer includes sub-options for Sublot Lines, Landhooks, Great Lots, Leader Lines, and LTR. They are OFF by default.

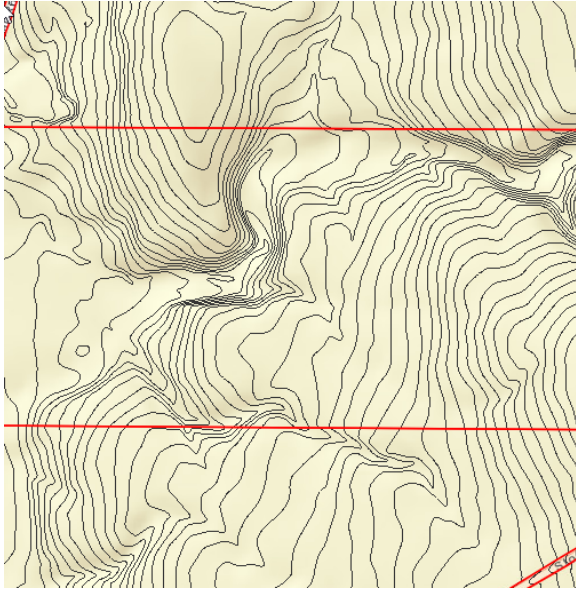


Chautauqua County Parcel Viewer 2.0

Instruction Guide

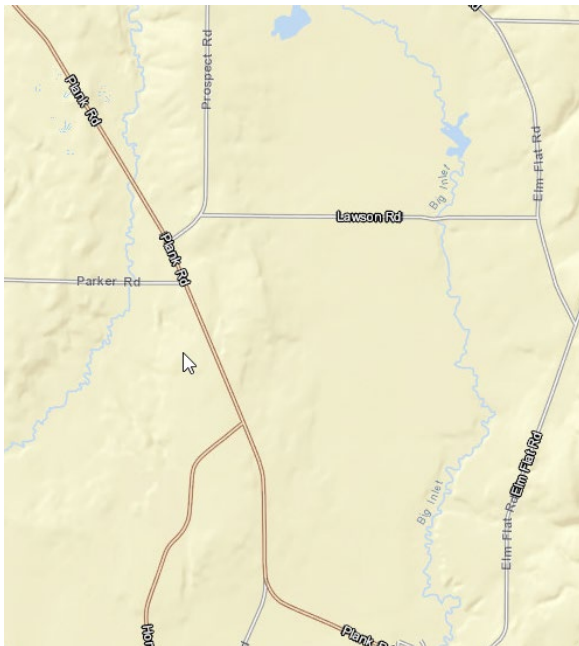
Elevation Contours – 5 Foot

Elevation Layer displays elevation contours. It is OFF by default.



World Hybrid Overlay

World Hybrid Overlay Layer adds additional information from other sources to the map. It is OFF by default.



Chautauqua County Parcel Viewer 2.0

Instruction Guide

World Imagery

The World Imagery layer adds orthographic images to the map (orthos). It is OFF by default.



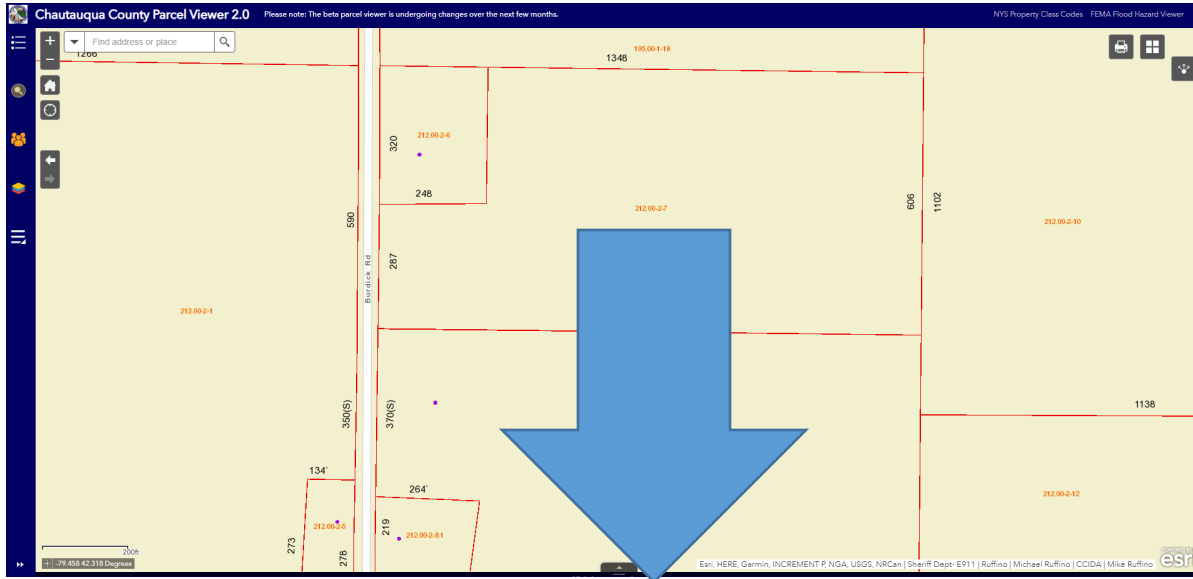
Chautauqua County Parcel Viewer 2.0

Instruction Guide

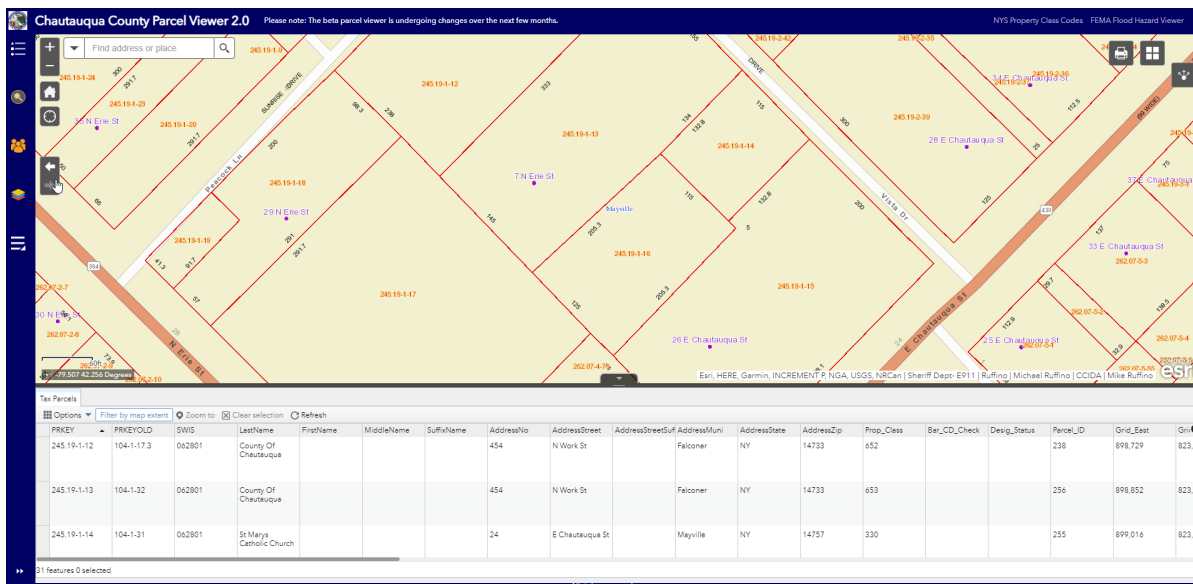
Tax Parcel Information

Tax Parcel Attribute Table

To view the Tax Parcel Attribute Table, click the icon at the bottom center of the map.



The parcel attribute table will then appear. It will include all parcels in the current view, and refresh as the map is manipulated.



Chautauqua County Parcel Viewer 2.0

Instruction Guide

Parcel Tax Information

To view tax information on a parcel, click on the parcel. A frame will appear with a link to VIEW TAX INFORMATION.



Parcel Ownership History

To view ownership history information on a parcel, click on the parcel. A frame will appear with a link to VIEW OWNERSHIP HISTORY.



Chautauqua County Parcel Viewer 2.0

Instruction Guide

Property Information Details

To view property information details on a parcel, click on the parcel. A frame will appear with a link to VIEW PROPERTY INFORMATION DETAILS.

